

The Chesapeake



{Elevation 1}



{Elevation 2}



{Elevation 3}



{Elevation 4}

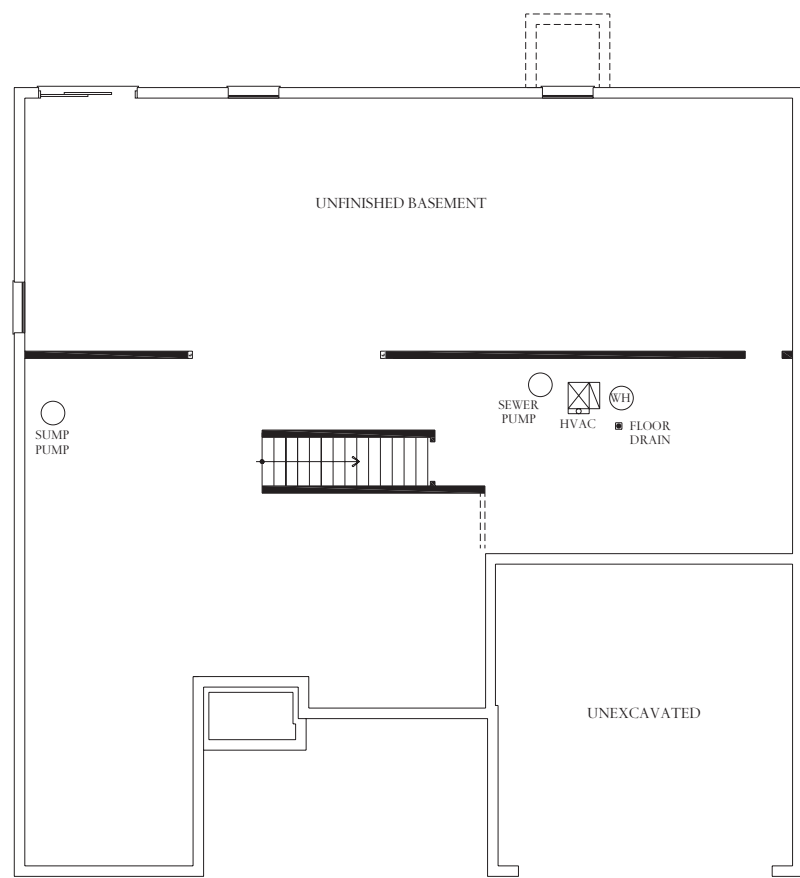


{Elevation 5}

Elevations may show optional features.

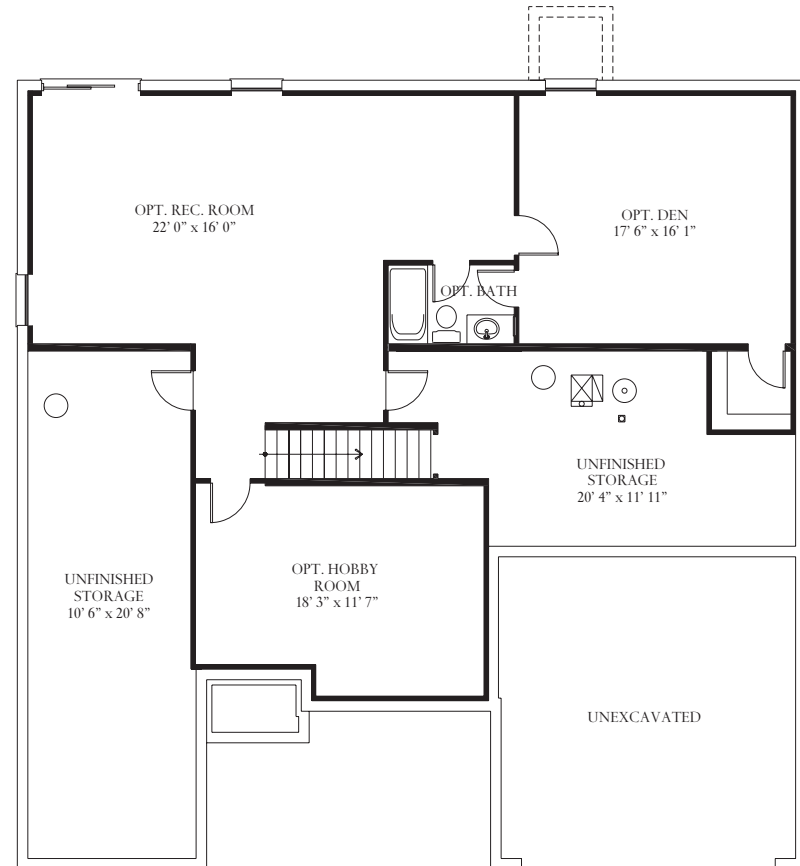
This lovely 3 Bedroom, 2 and 1/2 bath home offers main level living for your family. The open kitchen and family room space provide a perfect space to entertain. The master suite features two walk in closets, dual vanities and a step in shower. Bedrooms 2 and 3 share a full bath and are sized right for a growing family or guests. With options including, extensions to the family room, a morning room, sitting room or finished basement, this home can accommodate most any living situation. There is even an optional second floor with a studio space, bedroom and full bath. This home starts at 1912 sq. ft.

ATLANTIC BUILDERS
GIVING YOU MORE



Unfinished Basement

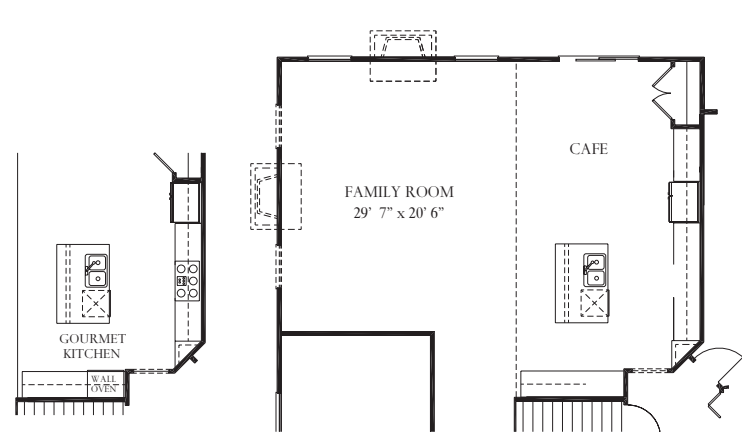
LOWER LEVEL



Opt. Finished Basement

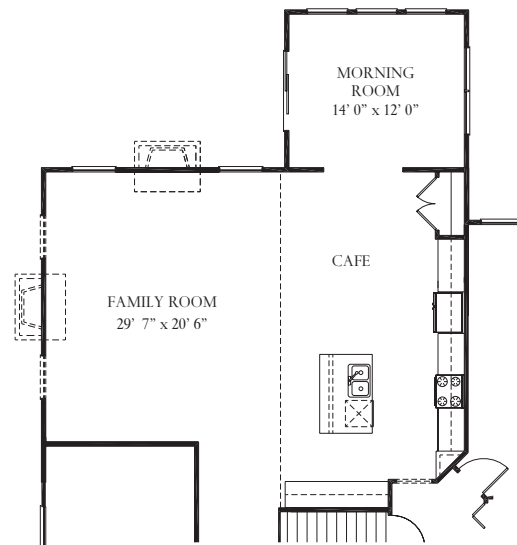
ATLANTIC BUILDERS
GIVING YOU MORE



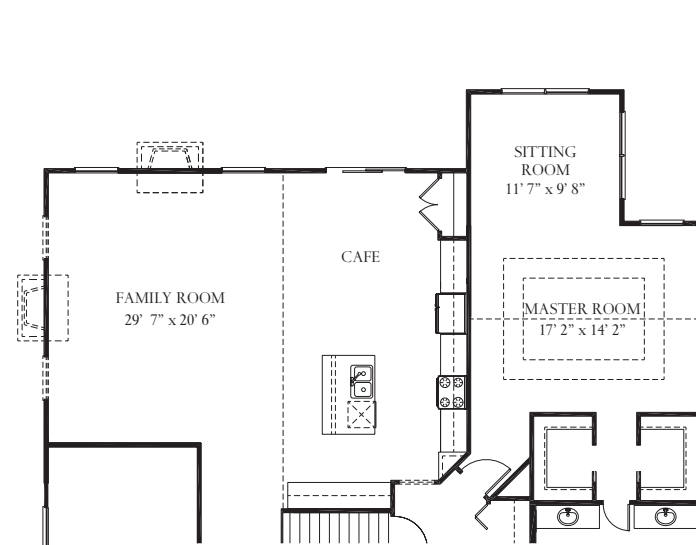


Ext. Family Room

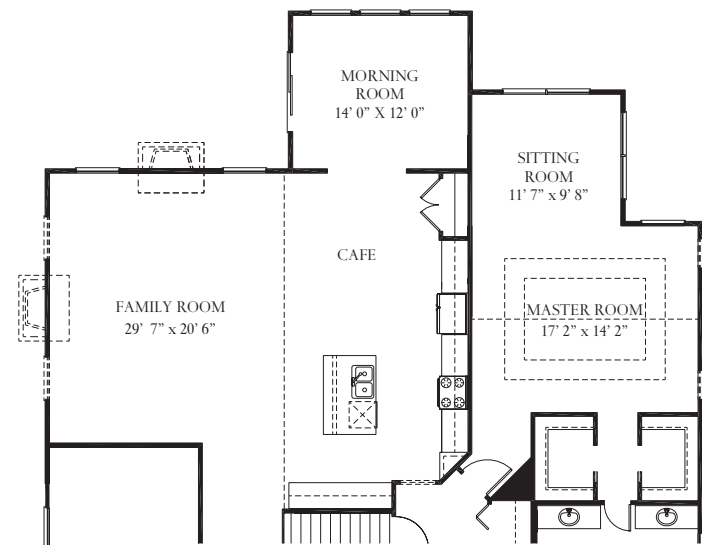
MAIN LEVEL



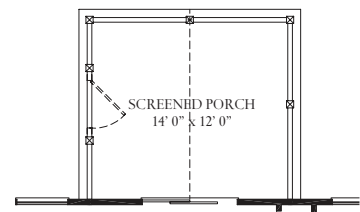
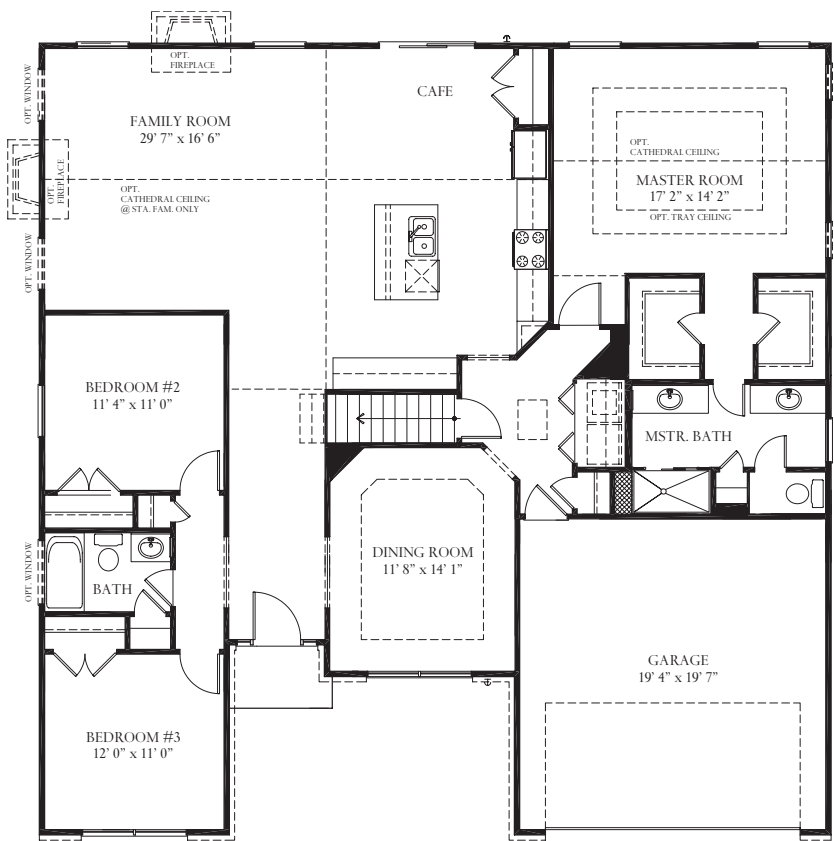
Ext. Family & Morning Rooms



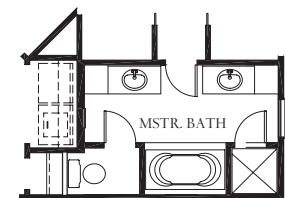
Ext. Family & Sitting Rooms



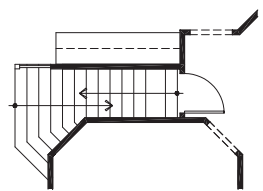
Ext. Family, Morning & Sitting Rooms



Opt. Screened Porch

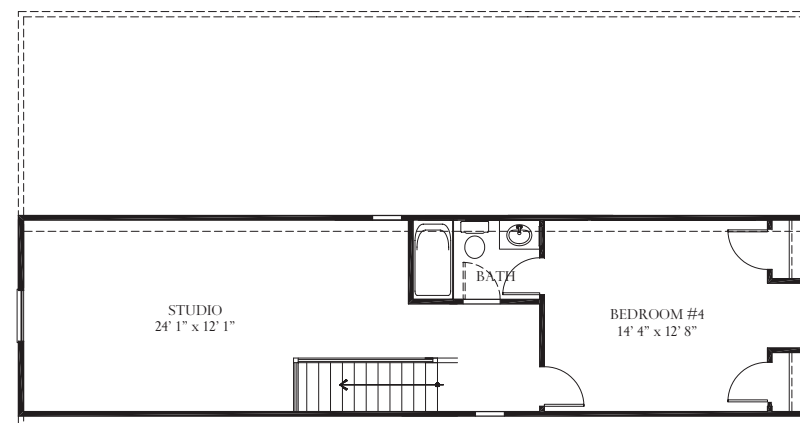


Opt. Master Bath

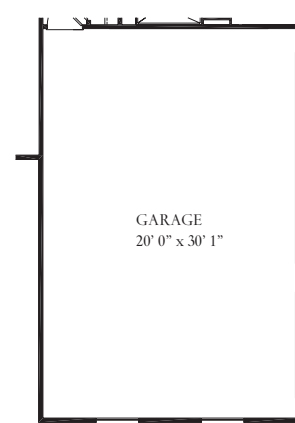


Stair @ Opt. Second Floor

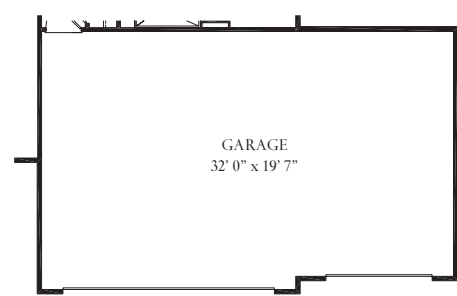
UPPER LEVEL



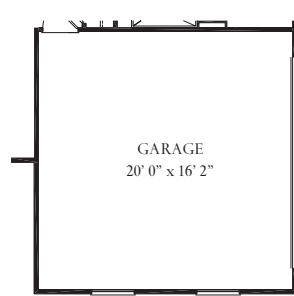
Opt. Second Floor Plan



3-Car Side



3-Car Front



2-Car Side

These renderings and floorplans are conceptual only. Actual details may vary. This insert is for illustrative purposes only. Atlantic Builders' continuing research and development program means specifications and plans are subject to change without notice. Standard features vary per community. Please consult Community Sales Manager for details.